

# Spare parts/Part lists

Electric water tank

---

**Orca**

**KERN-DEUDIAM**

Diamantwerkzeuge und Maschinen GmbH

Tel. +49 5257 507-0 Industriestraße 24

Fax +49 5257 507-40 33161 Hövelhof

kern-deudiam.de | info@kern-deudiam.de

# **Electric water tank**

**Model: Orca**

## **Safety precautions**

1. Use of water tank can be dangerous. You must read, understand and follow the safety precautions for your and others protection. Don't disassemble, modify or assemble this tank without our company's instructions.
2. Improper or careless use of this tank can cause serious injury. Minors should never be allowed to use this tank. This tank should not be used when children, bystanders or animals are in the area.
3. Never leave the tank unattended without turning off the power, disconnecting the power plug and flushing the tank of any harmful chemicals.
4. Never lend or rent this tank without the manual. Make sure anyone using this tank understands all the contents included in this manual.
5. Carefully read instructions on chemicals use. When using chemicals, please wear protected clothing to protect your eyes, nose, hands and your whole body.
6. Don not use this tank to store flammable chemicals. Observe all local regulations, ordinances and laws regarding use of this tank.
7. Always place the tank on a flat, level, bare ground and make sure to use the strainer when filling the tank.
8. Our tank is designed for use with most agricultural chemicals, pesticides, cleaning agents and many other solutions. Do not use caustic or corrosive solutions. Contact us if you are not sure if the chemical is compatible with the tank.

## **Charging the tank**

**Note: battery must be charged 12 hours before the first use. Should charge the battery after 2 months unused.**

1. Fully charge the battery before or after each use. Be sure plug and socket are in the right direction. Turn the power off after charge.
2. Should be promptly charged for 12 hours when the instruction needle points at the yellow grid area. Battery should be charged 12 hours before first use. Charge the battery at any time. This will not affect the cycle life. You can charge it after any period of use.
3. A fully depleted battery needs more than 10 hours of charge time. At first the charge indicator light shows green, after more than 10 minutes charged, the light will turn into red. It means the battery is being charged. Once the battery is at full capacity, it will turn into green.

**! If you need to replace the battery in this tank, the battery will be subjected to our confirmation. Please handle the discarded battery in the recoverable centre.**

## **Use of the tank**

1. Put the tank on flat ground when filling.
2. Install the outlet strainer and inlet strainer in the right position to protect the pump and nozzles from blocking. Any debris in the pump may cause the tank working improperly.
3. Change the nozzles and adjust the flow according to your water requirement. You'd better set the flow rate well before use. The lower flow rate is, the lower current is, then the battery can be used for a longer time; On the contrary, if the higher flow rate, the higher current is, then the battery can be used for a shorter time.
4. When finishing use, turn the power off, add some clean water to the tank. Turn the tank on, allow the pump to run until the tank is empty, make sure the pump, hose and strainer are fully cleaned, then store your tank in a shade place.
5. The maximum temperature of the water to be used must not exceed 43 °C.
6. Once the tank is full, return the lid to the tank neck and rotate it firmly clockwise. Wipe the exterior of your tank with cloth if any spillage occurred while filling.

### **Turn the power on/ off**

1. A power switch and flow adjuster switch included in the tank.
2. Turn the power on, Start your machine connected and open the tap. When closing the tap the pump will stop working at the same time. When the tank runs out of water, the pump will continue to run.
3. When this occurs simply turn the power off.
4. Turn the power off, point the hose at a safe place and release the residual liquid.

### **Low battery notice**

When the tank is low power consumption, the flow will gradually become lower, that is, the battery needs to be recharged. You can recharge at any time and the battery will return to the best of saturation.

### **Transportation**

When transporting your tank, be sure that the power is off. Always put the tank in an upright position, protect the hose from sharp objects and never transport your tank with harmful chemicals in the tank.

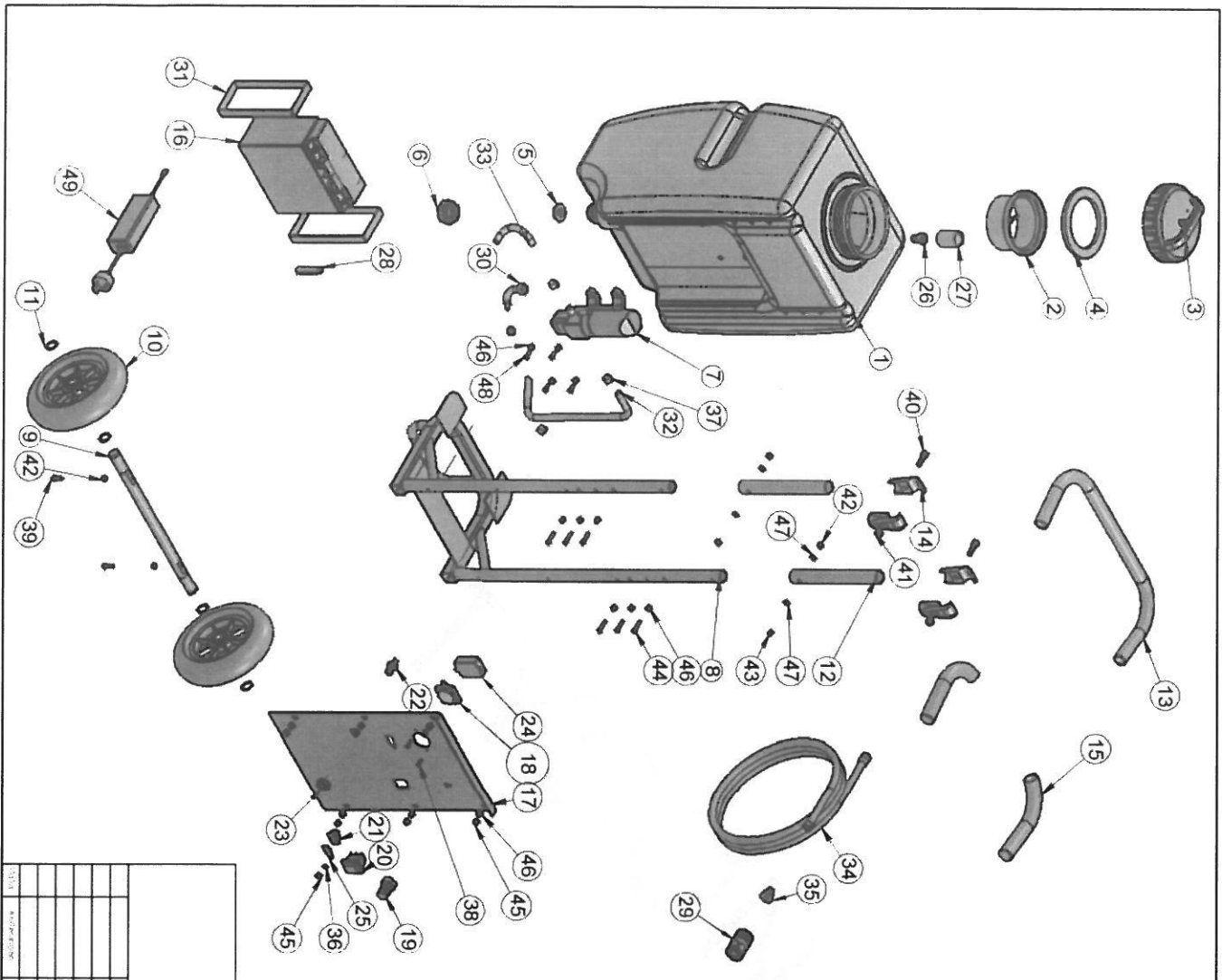
### **Cleaning and storage**

1. After use, add fresh water, open the power switch and let water flow to clear any debris from the tank, pump, hose and strainer.
2. Make sure to fully charge the battery after each use.
3. Store the tank in a shade place where children cannot reach.

***! When putting the tank in a cold environment, you must discharge all the liquids in the tank to protect it.***

### **Specification and performance**

Capacity	35 liter
Battery	12 V/ 17AH (fuse: 6A)
	Maintenance-free power battery
Charger	Input 220V/ 50HZ – Output 12V/ 200MA – Automatic Saturation
Pump	12V/ 2.6A – Flow: 4.0 L/min – Pressure switch cut off at 70Psi (0.48Mpa)
Duty Cycle	Five block rate of flow adjustment
Meter	Electricity instruction
Hose	6 meters output pressure hose with brass nut connector
Tire	Inflatable tire, dimension: 8" pressure: 3.0BAR
Weight	G.W.: 22KGS N.W. 19KGS
Dimension	43.5 x 36 x89cm



Pos.	Art.Nr.	Name engl.	Name Germ.	Qty
1	11E:40101	tank	Tank	1
2	11E:40102	inlet filter	Einlaß Filter	1
3	11E:40103	cover	Deckel	1
4	11E:40104	cover sealing	Deckel dichtung	1
5	11E:40105	discharge sealing	Auslaßdichtung	1
6	11E:40106	discharge cover	Auslaßschuttplatten	1
7	11E:40107	pump	Pumpe	1
8	11E:40108	trolley	Fahrgestell	1
9	11E:40109	axle	Radachse	1
10	11E:40110	wheel 200x50	Rad 200x50	2
11	11E:40111	snap ring	Sicherungsring	4
12	11E:40112	adjustment	Höhenverstellung	2
13	11E:40113	handle	Griffstange	2
14	11E:40114	pipe connector	Rohrklemme	2
15	11E:40115	rubber cover	Handgriff	2
16	11E:40116	battery	Akku	1
17	11E:40117	steel plate	Abdeckung	1
18	11E:40118	meter	Akkustandsanzeige	1
19	11E:40119	adjuster switch	Drehknopf	1
20	11E:40120	power switch	Ein/Aus Schalter	1
21	11E:40121	charge socket	Ladebuchse	1
22	11E:40122	tube connector	Schlauchanschluss	1
23	11E:40123	nut M14	Mutter M14	1
24	11E:40124	potentiometer	Potentiometer	1
25	11E:40125	protection cap	Schutzkappe	1
26	11E:40126	outlet	Auslass	1
27	11E:40127	outlet filter	Auslassfilter	1
28	11E:40128	Sicherung 250V 6A	Leise 250V/6A	1
29	11E:40129	Gardena connection	Gardena Anschluss	1
30	11E:40130	plastic angle	Kunststoffwinkel	1
31	11E:40131	battery/handler	Akkubehälter	2
32	11E:40132	pipe (outlet)	Schlauch (Ausgang)	1
33	11E:40133	pipe (inlet)	Wassereinschlauch	1
34	11E:40134	water pipe	Gardena Adapter	1
35	11E:40135	Gardena adapter	Dichtung	1
36	11E:40136	gasket	Schlauchschleife	4
37	11E:40137	hose clip	Kreuzschraube M6x16	2
38	11E:40138	cross screw M6x16	Zylinderkopfschraube M6x16	2
39	11E:40139	cylinder head screw M6x25	Zylinderkopfschraube M6x25	2
40	11E:40140	nut M6	Mutter M6	2
41	11E:40141	nut M8	Mutter M8	4
42	11E:40142	nut M6	Mutter M6	2
43	11E:40143	hexagon screw M6x35	Sechskantschraube M6x35	2
44	11E:40144	hexagon screw M6x25	Sechskantschraube M6x25	6
45	11E:40145	cross screw M6x12	Kreuzschraube M6x12	7
46	11E:40146	washer Ø5mm	U-Scheibe Ø5mm	12
47	11E:40147	washer Ø6mm	U-Scheibe Ø6mm	4
48	11E:40148	cross screw M6x16	Kreuzschraube M6x16	4
49	11E:40149	charger	Ladegerät	1

Projektion:

Name: **Water Tank BWT 40P**

Teilzeichnungen: **1199953**

Maßstab: **1:1**

Blatt: **A3**